

Note: Participation by Roger Barrett or Danielle Pinet in projects featured within "Background Experience" as employees of firms is clearly stated, and copyright for those projects remains with the firms. Copyright or authorship for other projects within "Background Experience" rests with Roger Barrett or Danielle Pinet, individually, in partnership, in association with other architects, or through universities.

## BACKGROUND EXPERIENCE

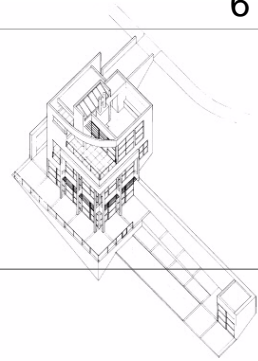
6

### Cube House

Los Angeles 1991

An ideas competition for a house, a cubic composition of steel, glass, stucco and stone, entered from the top of the site, with layers added and volumes subtracted to juxtapose solidity and transparency.

Roger Barrett, private practice



### Evian-Sur-Lac Sports Complex

France 1992

A proposal for a gymnasium and sports complex in the French countryside, with halls extending from linear passageways. The building forms merge with the landscape.

Roger Barrett, architect participant in design competition, Antoine Grumbach Architecte.

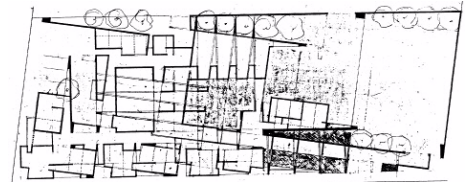


### Funeral Home

Los Angeles 1992

On Pico Boulevard, the intention was the creation of a spatiality which would allow users to remove themselves from the outside chaos. The overlapping of various geometries takes the project outside of the realm of rational thinking.

Danielle Pinet, student project - critic Coy Howard, SCI-Arc.



### Cal Earth

Hesperia, California 1992

Experimental housing on the outskirts of Los Angeles to teach and develop appropriate ways to build in the desert. Some of the projects built are: a brick dome; a sandbag dome; a three vault house; and many experimental structures.

Danielle Pinet, student project, professor: Nader Khalili, SCI-Arc.



### Atlantic Coastal Development

Rocha, Uruguay 1993

A housing type for a fishermen's village adjacent to a World Biosphere reserve. The new typology develops from the traditional dwelling built out of timber and straw, and incorporates the use of natural energies.

Danielle Pinet, student thesis project, critics: Mary Ann Ray & Nader Khalili, SCI-Arc.

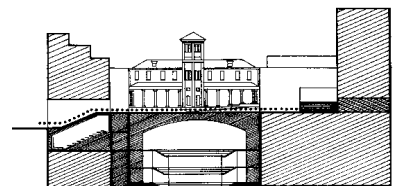


### Pymont Town Square

Pymont Sydney 1993

A masterplan for the area bounded by John and Harris Streets. A proposal for a town square, light rail station, housing, hotel (existing), theatre/cinema complex and commercial development.

Danielle Pinet, project architect for the schematic design and proposal submission, Lewin & Tzannes.

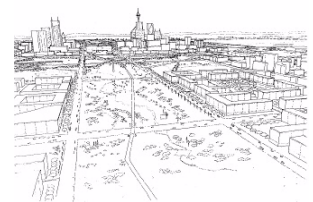


### Donghai City

China 1993

A proposal for a city of 150,000 on an industrial island in the South China Sea.

Roger Barrett, senior design architect participant in design and proposal submission, Peddle Thorp Architects.



### Powerhouse Museum Approaches

Sydney 1993

Submission for extensions to existing museum to resolve problems of entry and approach from the city via an existing pedestrian bridge. The successful recommendations created the basis for a limited invited design competition.

Roger Barrett, senior design architect participant in concept preparation & submission, Peddle Thorp Architects.

