

Note: Participation by Roger Barrett or Danielle Pinet in projects featured within "Background Experience" as employees of firms is clearly stated, and copyright for those projects remains with the firms. Copyright or authorship for other projects within "Background Experience" rests with Roger Barrett or Danielle Pinet, individually, in partnership, in association with other architects, or through universities.

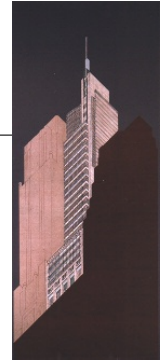
BACKGROUND EXPERIENCE

4

Chifley Tower Sydney 1988

A proposal for a 42 storey, 117,000 square metre office tower in central Sydney. With magnificent views over the harbour the tower has curved glass walls set against punctuated solids. The tower strikes a distinctive profile in the city skyline.

Roger Barrett, architect participant in concept design, Kohn Pedersen Fox.



Heron II Tower New York 1988

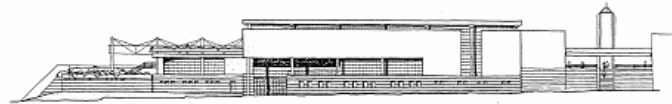
A proposal for a 20 storey, 117,000 square foot office tower in mid-town Manhattan, adjacent to another small tower designed by the firm. With modern lines the tower is massed in relation to its neighbours while maintaining a distinctive skyline profile.

Roger Barrett, architect participant in schematic design, Kohn Pedersen Fox.

French Museum of Photography Bievres, Paris, France 1988

Competition for a museum of photography, 9 km south of Paris gateway to Paris, the museum sits along the highway, with a system of elevated passages connecting to the commercial activities on the other side of the highway.

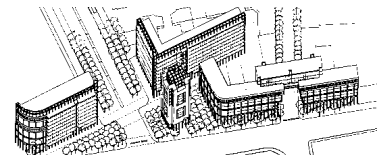
Danielle Pinet, design architect responsible for the museum design, Reichen & Robert.



Montrouge Mixed Development Montrouge, Paris 1988

This development is located at the exit from one of Paris' doors, and is the gate to Montrouge. Housing offices, residential, public activities, gardens and parking, the buildings have the scale to anchor the site.

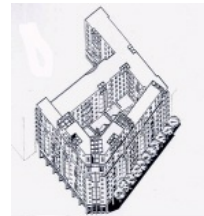
Danielle Pinet, architect participant in schematic design, Reichen & Robert.



Montrouge Housing Development Montrouge, Paris 1988

This development is located at the exit from one of Paris' doors, and is the gate to Montrouge. The building containing housing and some commercial at the ground level is of a courtyard type, and a colonnade wraps around the street edge.

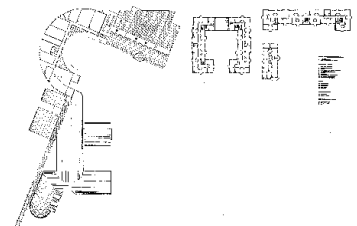
Danielle Pinet, architect participant in schematic design, Reichen & Robert.



School of Hotel Management Chateau de Montvilliers, Bazelle, France 1988

With a croissant shape, on the axis of the chateau, the school sits over the creek integrating it to the landscape. A circulation gallery is the spine of the building. The composition based on a trace in the spirit of the 18th century, gives order to the various pavilions.

Danielle Pinet, architect participant in competition design, Reichen & Robert / Bruneau & Buttiker.



Pacific Centre Hong Kong 1989

A proposal for an embassy and 60 storey, 3,000,000 square foot office towers in Hong Kong. Twin cylindrical towers of glass curtain wall set against stone clad rectilinear solids provide both outstanding views and a striking appearance in the Hong Kong cityscape.

Roger Barrett, architect participant in concept design, Kohn Pedersen Fox.



Grange RD Medical Centre Singapore 1990-91

A proposal for a 25 storey medical office tower in a tropical climate. A spiraling sculptured metal clad skin wraps around a stone clad rectilinear solid containing services and circulation.

Roger Barrett, architect participant in schematic design, and preparation of revised proposals in accordance with the emerging requirements of the city authorities, Richard Meier & Partners.

