

Note: Participation by Roger Barrett or Danielle Pinet in projects featured within "Background Experience" as employees of firms is clearly stated, and copyright for those projects remains with the firms. Copyright or authorship for other projects within "Background Experience" rests with Roger Barrett or Danielle Pinet, individually, in partnership, in association with other architects, or through universities.

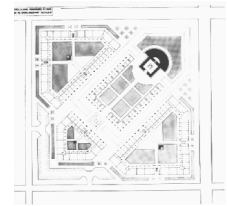
## BACKGROUND EXPERIENCE

2

### Housing Project in Imaginary Urban Block Venice 1984

A theoretical block for a housing development in Italy. Medium density housing defines the street edges, the heart of the block has common services and a park, internal streets are defined by housing and common services.

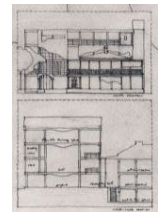
Danielle Pinet & Alvaro Farina, student project, critic: Franco Stella, IUAV.



### R.A.I.A. Headquarters "Tusculum" Sydney 1984

This proposal for an addition to John Verge's "Tusculum" creates a modernist framed structure behind the heritage building linked by an entry court, juxtaposing material, space and scale.

Roger Barrett, Commended student competition entry.



### Sydney Theatre Company Headquarters Sydney 1984

A project for the residence and public performing space for a working theatre company, located in Sydney's Walsh Bay area. The theatre company is noted for modern, experimental and innovative performance, and their theatre reflects these qualities.

Roger Barrett, student project, critics - Harry Seidler & Vivien Fraser, Sydney University.



### Australian Landscape Museum Sydney 1984

A project for a cultural centre, comprising museum, library and auditorium, dedicated to raising awareness of the cultural value of appreciation of the Australian landscape, located on a headland at the mouth of Sydney's harbour..

Roger Barrett, student project, critic - Glenn Murcutt, Sydney University.



### Darling Harbour Redevelopment Sydney 1985

A major urban regeneration project for Sydney's Darling Harbour area, transforming disused railway yards and sheds into a lively public precinct .

Roger Barrett, architect responsible for preparation of design briefs, guidelines, reports, studies, concepts, proposals, studies, sketches, and Design Directorate office interiors, MSJ Group.



### Old Age Pensioner Units Ryde, Sydney 1985

A proposal for a group of 52 units, which includes 3-storey walk-up apartments and townhouses, as part of a larger Housing Commission development. The scheme is tightly constrained by the Commission's requirement to use standard unit plans in blocks of six.

Roger Barrett, architect participant in construction documentation, McConnel Smith & Johnson.



### Gallery luav Venezia, Italy 1985

Gallery to house small productions and exhibitions. The arcade has a terrace which in the proposal is covered with a lead roof over a timber structure. Lead roofs are used for public buildings in Venice. Some slabs of "istria" stone are placed in between the windows.

Danielle Pinet, student project - critic Umberto Tubini, Istituto Universitario di Architettura di Venezia.



### Isolated House Imaginary rural site 1985

A counterpoint to the problem of insertion into the cities' fabric, which was the most pressing architectural problem in Italy at the time, this project investigates instead the issues involved in designing a rural house with no constraints.

Danielle Pinet & Alvaro Farina, student project - critic Francesco Buzzi, Istituto Universitario di Architettura di Venezia.

