

Note: Participation by Roger Barrett or Danielle Pinet in projects featured within "Background Experience" as employees of firms is clearly stated, and copyright for those projects remains with the firms. Copyright or authorship for other projects within "Background Experience" rests with Roger Barrett or Danielle Pinet, individually, in partnership, in association with other architects, or through universities.

BACKGROUND EXPERIENCE

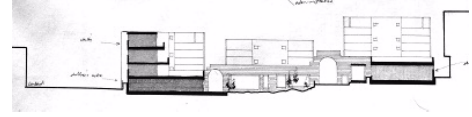
1

Sarah Cooper Mixed-use

Russian Hill, San Francisco, 1981

A project for a mixed use development comprising apartments, an elementary school, and local retail. Housing above retail is provided in blocks at the perimeter, creating a courtyard in which the elementary school is located.

Roger Barrett, student project, San Francisco Centre for Architecture & Urban Studies



Yulara Tourist Resort

Ayers Rock 1981

A resort in arid conditions near Ayers Rock, Central Australia, comprising two hotels, visitors centre, housing, commercial facilities, public buildings, service facilities and campgrounds.

Roger Barrett, architectural assistant participant in design and responsible for preparation of working drawings of the 200 room international hotel component, Philip Cox & Partners.



Power Institute

Sydney 1983

A project for a centre of learning about the visual arts, comprising an art gallery, educational facilities and storage and conservation facilities. Located at the edge of Sydney University campus, internal spaces are grouped around a central public court which acts as a display area for sculpture.

Roger Barrett, student project, critic - Andrew Andersons, Sydney University.



Composer's House & Studio

Brooklyn, Sydney 1983

A project for a weekend residence for a composer, comprising three pavilions on a site divided by rock ledges. The lower pavilions are for bedrooms, the middle for living, and the upper for a music studio.

Roger Barrett, student project, critic: Alexander Tzannes, Sydney University.

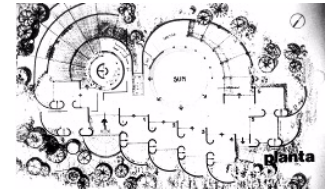


School Paso Molino

Montevideo, Uruguay 1983

The new school sits in a park in an urban area of the city. It is designed so that each classroom takes advantage of the park, by having a garden surrounded by a round wall which allows park views but also provides security.

Danielle Pinet, student project, Facultad de Arquitectura, Montevideo.

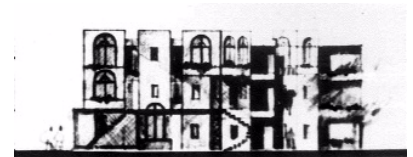


Housing Paso Molino

Montevideo, Uruguay 1983

A small scale housing project located at the end of a cul de sac. The building sits on the street like all others in the area but curves away at the end to create a small urban park for the neighbourhood.

Danielle Pinet, student project, critic: Montaguado, Facultad de Arquitectura, Montevideo.

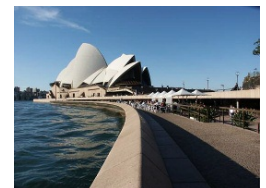


Approaches to the Sydney Opera House

Sydney 1984

Modifications to the waterfront edge and approaches to Utzon's Opera House, creating a covered link to Circular Quay.

Roger Barrett, architectural assistant participant in design, N.S.W. Government Architect Special Projects Branch



Extensions to the State Library of N.S.W.

Sydney 1984

Extensions to the existing library, adjacent to the state parliament.

Roger Barrett, architectural assistant participant in design, N.S.W. Government Architect Special Projects Branch

